

# PLASMA

THE FOURTH STATE OF MATTER

99.9% of the observable matter in the universe is plasma, it is a fluid state that, unlike gas, is made up of charged particles.

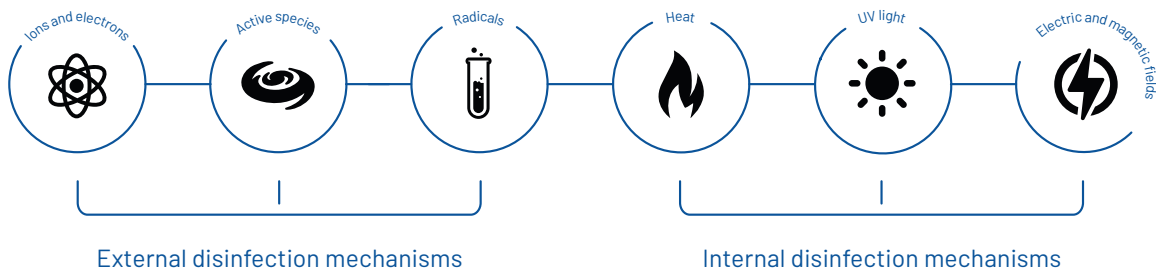
If enough energy is applied to a gas, such as the air we breathe, it can turn into plasma.

Recent studies have shown that plasma can effectively **kill** microbial pathogens such as **bacteria, fungi, and viruses**, as well as degrade toxins. Disinfection is an act or process, physical or chemical, that destroys or eliminates all forms of life, especially microorganisms.

When we convert air into plasma, different disinfection mechanisms are generated that make Plasma the **best technology** to clean and **purify the air** we breathe, **take care of our health** and provide us with a better quality of life.



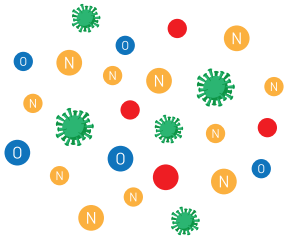
[www.sfmedicalsupplies.com](http://www.sfmedicalsupplies.com)



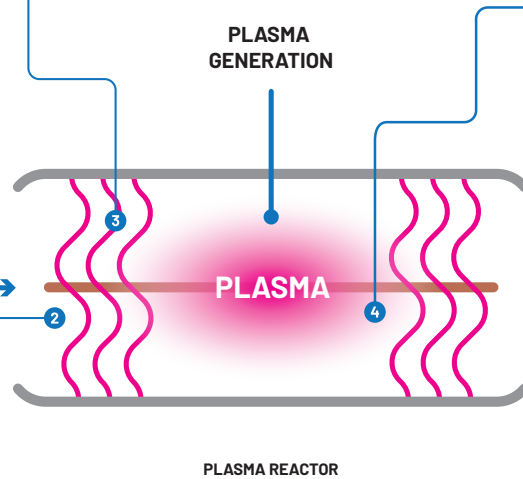
## NON THERMAL PLASMA TECHNOLOGY

Inside the reactor, electrical energy is applied in such a way that the air is converted into plasma.

Air flows through the equipment due to the fans.

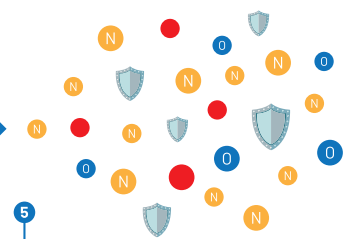


Air passes through the plasma reactor.



**ELECTRONS, IONS, RADICALS AND ACTIVE SPECIES**

The disinfection mechanisms that make it possible to purify the air (External and Internal) are activated.



As a result, purified and activated air is obtained with particles (Electrons, Ions, Radicals and Active Species) capable of generating additional protection for a limited time in the environment.



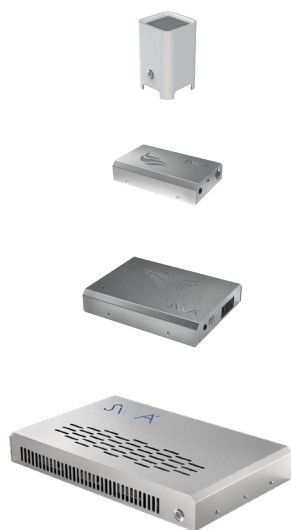
Each of these devices works using non-thermal plasma technology, generated by air flowing into the equipment and electricity.



The equipment has FDA registration, and laboratory certificates that validate its effectiveness in inactivating viruses (including SARS-COV-II), bacteria, and fungi in the environment. Plus you don't need consumables, no filters to change.



Each manufactured equipment includes a one-year warranty, in addition to the immediate availability of spare parts and technical service if required.



NAME	MODEL	RECOMENDED AREA	ELECTRICAL CONSUMPTION	WIFI CONECTIVITY	WEIGHT	DIMENSIONS	MATERIAL
PREMIUM	SM0	15m <sup>2</sup>	10W	✓	600g	10 x 10 x 17cm	Wood
MAX-i	SM1	35m <sup>2</sup>	20W	✓	1100g	13,4 x 21 x 4,6cm	Stainless Steel AISI 304
MAX	SM2	70m <sup>2</sup>	30W	✓	2300g	22 x 28,5 x 5,6cm	
MAX PLUS	SM3	100m <sup>2</sup>	60W	✗	4200g	28 x 45 x 6,5cm	